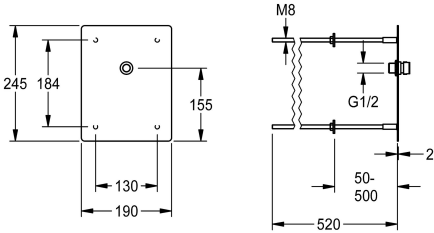


Mounting plate with connecting nozzle for shower head for rear panel mounting

Modell-Linie: SHOWER-ACCESSORY | ACXX2023
Showers | Complementary parts showers



KWC-No.

2030068175

Mounting plate with connecting nozzles for shower head DN 15 for concealed mounting. Especially suitable for facilities at risk of vandalism. Stainless steel plate 190 x 245 x 2 mm for invisible mounting via threaded rods, up to a wall thickness of 50 to 500 mm,

with connecting nozzle with pre-fitted flow regulator 9.0 l/min for KWC shower head DN 15 (required separately).
Shower head must be ordered separately.

Technical Data

adjustable tilt angle
type
type of shower head

no
shower head
jet shower head



Mandatory Accessories



AQUAJET-Slimline shower head for KWC shower panels and systems

2030054255
SHAS0011

AQUAJET-Comfort shower head for KWC shower panels and systems

2030054254
SHAC0011

MÜNCHEN shower head for KWC shower panels and systems

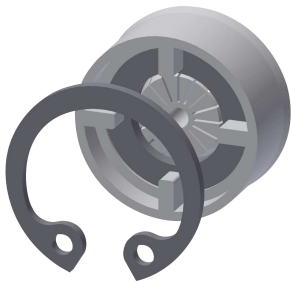
2030054793
SHMU0011

Optional Accessories

KWC

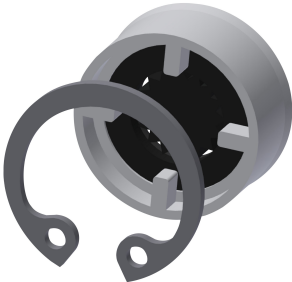
Mounting plate with connecting nozzle for shower head for rear panel mounting

Modell-Linie: SHOWER-ACCESSORY | ACXX2023
Showers | Complementary parts showers



Flow controller 6.0 l/min

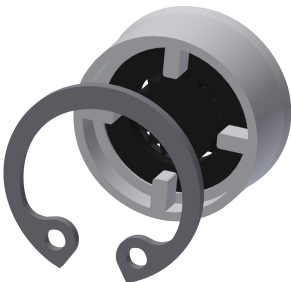
2030027586
ESHHE0004



Flow controller 12.0 l/min

2000104783
ESHHE0002

Spare Parts



Flow controller 9.0 l/min

2000104782
ESHHE0001



Stainless steel care set

2000109019
ZWSPL0024



Cleaning product CHROMOL

2000105091
ZWSPL0023