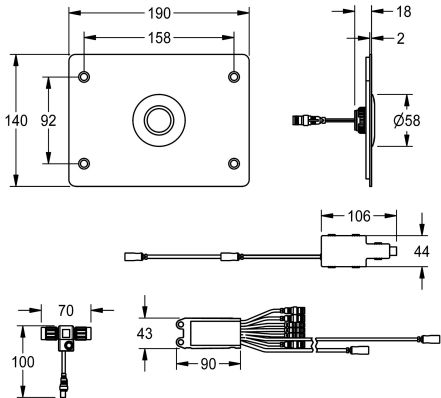




KWC F5E - A3000 open
Electronic WC control unit for concealed cisterns

Modell-Linie: F5E | F5EF4006
Flushing systems | Electronic WC flushing systems



KWC-No.
2030068182

F5E - A3000 open WC control unit for concealed cistern, electronically controlled. Especially suitable for facilities at risk of vandalism. With waterproof electronic module with additional input for sensors to be provided by the client, maximum distance to electronic module 5 m, servomotor unit, two waterproof electric T-junctions for connection to system cable, stainless steel cover plate

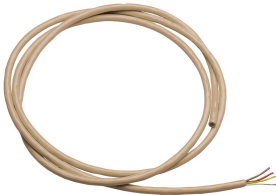
190x 140 x 2 mm, mounting from front with safety screws, including piezo push-button. Activated hygiene flushing 24 hours after the last activity. With facility for parameterization, cleaning deactivation and communication via ECC2 function controller, 24 V DC.

Technical Data

functional principle	electronic self-closing
material casing	stainless steel
material code casing	1.4301 Chrome Nickel steel V2A
surface finish	satin finished
surface finish casing	brushed
type of flushing fitting	for WC cistern



Mandatory Accessories



ECC2 function controller
2000108123
ZA3OP0011

ECC2 function controller
2030016282
ZA3OP0022

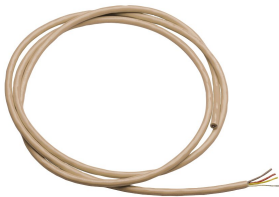
System cable
2000100801
ZAQUA077

System cable
2000100852
ZAQUA078



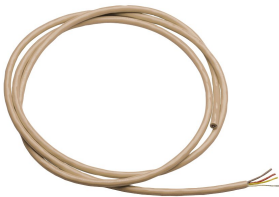
KWC F5E - A3000 open
Electronic WC control unit for concealed cisterns

Modell-Linie: F5E | F5EF4006
Flushing systems | Electronic WC flushing systems



System cable

2000104274
ZAQUA012



System cable

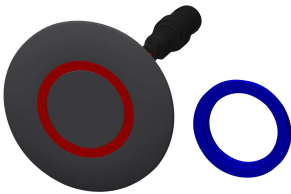
2000104272
ZAQUA011

Spare Parts



Electrical T junction

2000100853
ZAQUA075



Piezo Switch

2000104441
EAT3O0001



Holder for motor

2030035933
EA3OP0049



Stainless steel care set

2000109019
ZWSPL0024



Cleaning product CHROMOL

2000105091
ZWSPL0023