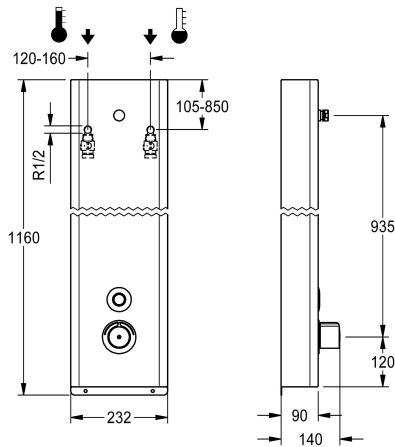


KWC F5E-Therm - A3000 open
Stainless steel shower panel

Modell-Linie: F5E | F5ET2041
Showers | Electronic self closing shower



Article Number

2030070431

F5E-Therm - A3000 open shower panel made of stainless steel for wall mounting with thermostatic mixer and connecting nozzles for shower head. Hydraulically controlled, for connection from the rear to hot and cold water. Function block with integrated solenoid valve cartridge, thermostat and mechanism for optional bypass solenoid valve cartridge to perform program-controlled thermal disinfection. Thermostat with anti-theft metal handle, adjustable and turn-proof temperature stop and option for manual thermal disinfection. All-metal construction, visible parts polished chromium-plated. Connecting nozzles for the required additional DN 15 KWC shower head with pre-fitted flow regulator 9.0 l/min. Housing made of stainless steel, single-piece enclosed, including

safety screws. Piezo push-button with start/stop function. With waterproof electronic module, electric T-junction for connection to system cable, connecting hoses with lockable water volume control with backflow preventer and strainer. Activated hygiene flushing 24 hours after the last activity. With facility for parameterization, cleaning deactivation and communication via ECC2 function controller, 24 V DC.

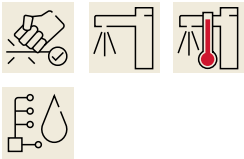
Dimensions of housing 232 x 1160 x 90 mm (W x H x D)

Shower head must be ordered separately.

Technical Data

additional connections	no
with backflow preventer	yes
circulation	no
compatible A3000 open	yes
connection with pay water disp	not possible
with filter	yes
adjustable flow time	yes
functional principle	electronic self-closing
for hand shower	no
hygiene flushing	yes
diameter nominal	DN 15
inlet size	G 1/2 A
Locking mechanism	Top section, non-ceramic
material casing	stainless steel
material code casing	1.4301 Chrome Nickel steel V2A
material fitting	brass-look
minimum flow pressure	1 bar
type of mixing	Thermostatic
power supply connection	A3000 open 24 V DC / 230 V AC
Type of power supply	Transformer

no
yes
no
yes
not possible
yes
yes
electronic self-closing
no
yes
DN 15
G 1/2 A
Top section, non-ceramic
stainless steel
1.4301 Chrome Nickel steel V2A
brass-look
1 bar
Thermostatic
A3000 open 24 V DC / 230 V AC
Transformer



KWC F5E-Therm - A3000 open
Stainless steel shower panel

Modell-Linie: F5E | F5ET2041
Showers | Electronic self closing shower


with rosettes/cover plate	yes
protective shutdown	no
shower pipe draining	no
Shower head	separately
sound insulation	no
surface finish casing	satin finished
surface finish fitting	chromed
surface treatment fitting	polished
temperature limit	yes
thermal disinfection	yes
with transformer/power supply	no
type of mounting	wall mounting
type of operation	sensor operation
type of sensor	piezo-electronic sensor
type of shower	shower panel
Volume flow rate bypass PWH	0.06 l/s
volume flow rate at 3 bar	0.15 l/s
water connection	hose (gland nut)
position of water connection	from backside
with soap dish	no
Accent colour	chrome-look (glossy)
Basic colour	stainless steel-look

Mandatory Accessories



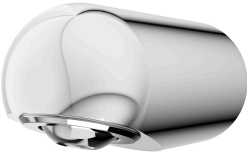
AQUAJET-Slimline shower head for KWC shower panels and systems

2030054255
SHAS0011



AQUAJET-Comfort shower head for KWC shower panels and systems

2030054254
SHAC0011



MÜNCHEN shower head for KWC shower panels and systems

2030054793
SHMU0011



ECC2 function controller

2000108123
ZA3OP0011



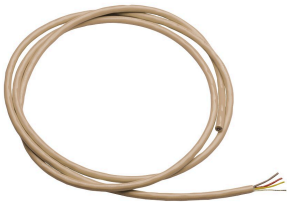
KWC F5E-Therm - A3000 open
Stainless steel shower panel

Modell-Linie: F5E | F5ET2041
Showers | Electronic self closing shower



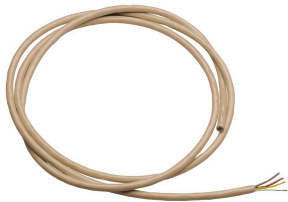
ECC2 function controller

2030016282
ZA3OP0022



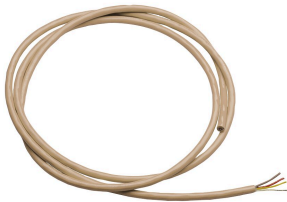
System cable

2000100801
ZAQUA077



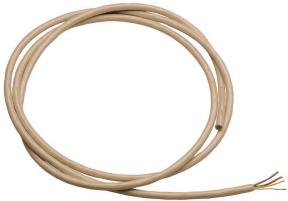
System cable

2000100852
ZAQUA078



System cable

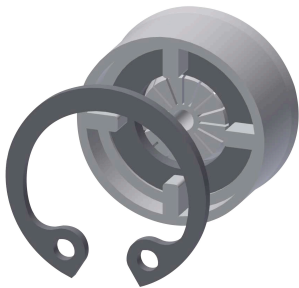
2000104274
ZAQUA012



System cable

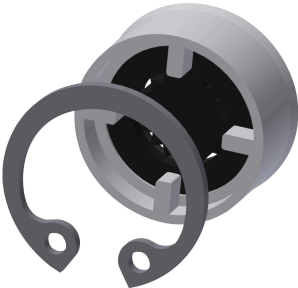
2000104272
ZAQUA011

Optional Accessories



Flow controller 6.0 l/min

2030027586
ESHHE0004



Flow controller 12.0 l/min

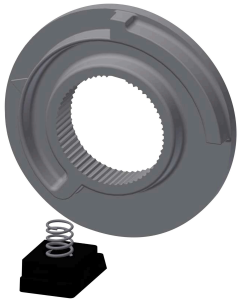
2000104783
ESHHE0002

Spare Parts



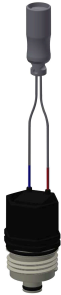
KWC F5E-Therm - A3000 open
Stainless steel shower panel

Modell-Linie: F5E | F5ET2041
Showers | Electronic self closing shower



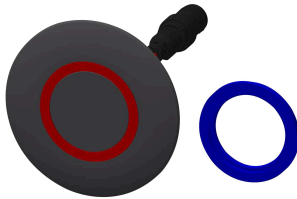
Temperature stop

2030003296
EAQLT0003



Solenoid valve cartridge

2030005666
EAQFU0004



Piezo Switch

2000104441
EAT3O0001



Flow controller 9,0 l/min

2000104782
ESHHE0001



Electrical T junction

2000100853
ZAQUA075



Stainless steel care set

2000109019
ZWSPL0024



Cleaning product CHROMOL

2000105091
ZWSPL0023