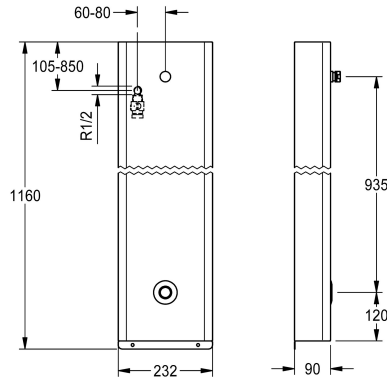


KWC F5E - A3000 open Stainless steel shower panel

Modell-Linie: F5E | F5EV2008

Showers | Electronic self closing shower



KWC-No.

2030070434

NEW

F5E - A3000 open shower panel made of stainless steel for wall mounting with straight-way valve and connecting nozzles for shower head. Electronically controlled, for connection from the rear to pre-mixed hot or cold water. Connecting nozzles for the required additional DN 15 KWC shower head with pre-fitted flow regulator 9.0 l/min. Housing made of stainless steel, single-piece enclosed, including safety screws. With solenoid valve, piezo push-button with start/stop function, waterproof electronic module, electric T-junction for connection to system cable, connecting hose with

lockable water flow regulator and strainer. Activated hygiene flushing 24 hours after the last activity. With facility for parameterization, cleaning deactivation and communication via ECC2 function controller, 24 V DC.

Dimensions of housing 232 x 1160 x 90 mm (W x H x D)

Shower head must be ordered separately.

Technical Data

additional connections	no
with backflow preventer	yes
circulation	no
compatible A3000 open	yes
connection with pay water disp	via electronic module
default automatic hygiene flus	24h after the last activity
default flow time	30 Seconds
with filter	yes
adjustable flow time	yes
functional principle	electronic self-closing
for hand shower	no
hygiene flushing	yes
diameter nominal	DN 15
inlet size	G 1/2 A
Locking mechanism	Top section, non-ceramic
material casing	stainless steel
material code casing	1.4301 Chrome Nickel steel V2A
material fitting	brass-look
maximum flow time	6,500 Seconds
minimum flow pressure	1 bar
minimum flow time	1 Seconds
type of mixing	no
overall depth	90 mm



KWC F5E - A3000 open Stainless steel shower panel

Modell-Linie: F5E | F5EV2008

Showers | Electronic self closing shower

overall height	1,160 mm
overall width	232 mm
Parameterization	network
power supply connection	A3000 open 24 VDC
position of power connection	from backside
Type of power supply	Transformer
protective system IP	IP59K
with rosettes/cover plate	yes
protective shutdown	yes
shower pipe draining	no
Shower head	for separately shower head
with shower set	no
sound insulation	no
surface finish casing	satin finished
surface treatment fitting	none
temperature limit	no
with transformer/power supply	no
type of mounting	wall mounting
type of operation	sensor operation
type of sensor	piezo-electronic sensor
type of shower	shower panel
volume flow rate at 3 bar	0.15 l/s
water connection	hose (gland nut)
position of water connection	from backside
with soap dish	no
Accent colour	chrome-look (glossy)
Basic colour	stainless steel-look

Mandatory Accessories



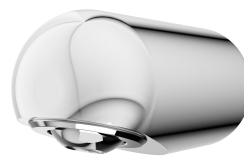
**AQUAJET-Slimline shower head for
KWC shower panels and systems**

2030054255
SHAS0011



**AQUAJET-Comfort shower head for
KWC shower panels and systems**

2030054254
SHAC0011



**MÜNCHEN shower head for KWC
shower panels and systems**

2030054793
SHMU0011



ECC2 function controller

2000108123
ZA3OP0011

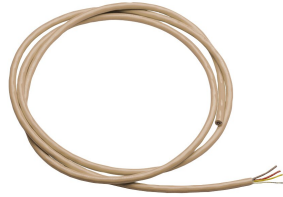
KWC F5E - A3000 open Stainless steel shower panel

Modell-Linie: F5E | F5EV2008
Showers | Electronic self closing shower



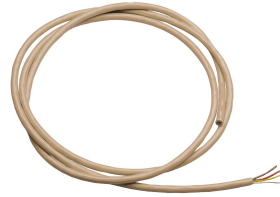
ECC2 function controller

2030016282
ZA30P0022



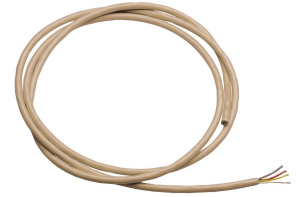
System cable

2000100801
ZAQUA077



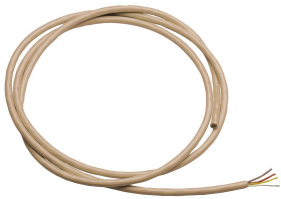
System cable

2000100852
ZAQUA078



System cable

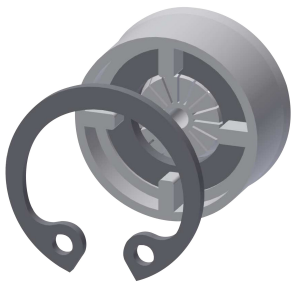
2000104274
ZAQUA012



System cable

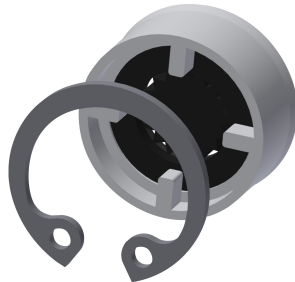
2000104272
ZAQUA011

Optional Accessories



Flow controller 6.0 l/min

2030027586
ESHHE0004



Flow controller 12.0 l/min

2000104783
ESHHE0002

Spare Parts

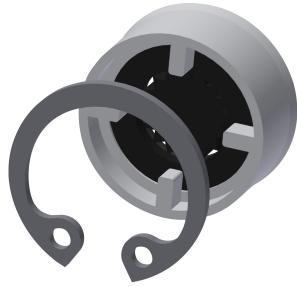
KWC F5E - A3000 open Stainless steel shower panel

Modell-Linie: F5E | F5EV2008
Showers | Electronic self closing shower



Solenoid valve

2000101328
ZAQUA032



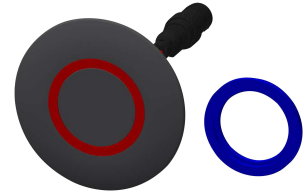
Flow controller 9,0 l/min

2000104782
ESHHE0001



Water quantity regulator

2030055270
ASXX2004



Piezo Switch

2000104441
EAT300001



Electrical T junction

2000100853
ZAQUA075



Stainless steel care set

2000109019
ZWSPL0024



Cleaning product CHROMOL

2000105091
ZWSPL0023