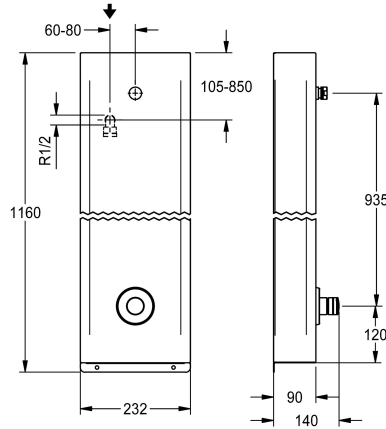


KWC F3S Stainless steel shower panel

Modell-Linie: F3S | F3SV2012
Showers | Self closing showers



KWC-No.

2030070435

NEW

F3S shower panel made of stainless steel for wall mounting with DN 15 self-closing straight-way valve and connecting nozzles for shower head. Especially suitable for facilities at risk of vandalism. Hydraulically controlled, for connection from the rear to pre-mixed hot or cold water. Self-closing functional part, piston-free design, self-closing and stepless adjustment of flow duration. Valve housing including shuttle valve seat, visible parts polished chromium-plated. Connecting nozzles for the required additional DN

15 KWC shower head with pre-fitted flow regulator 9.0 l/min. Housing made of stainless steel, single-piece enclosed, including safety screws. Connecting hose with lockable water flow regulator and strainer.

Housing dimensions 232 x 1160 x 90 mm (W x H x D)

Shower head must be ordered separately.

Technical Data

additional connections
with backflow preventer
circulation
compatible A3000 open
connection with pay water disp
with filter
adjustable flow time
functional principle
for hand shower
hygiene flushing
diameter nominal
inlet size
Locking mechanism
material casing
material code casing
material fitting
maximum flow time
minimum flow pressure
minimum flow time
type of mixing
overall depth
overall height
overall width

no
yes
no
no
not possible
yes
yes
hydraulic self-closing
no
no
DN 15
G 1/2 A
Top section, ceramic
stainless steel
1.4301 Chrome Nickel steel V2A
brass-look
35 Seconds
1.5 bar
5 Seconds
no
90 mm
1,160 mm
235 mm



KWC F3S

Stainless steel shower panel

Modell-Linie: F3S | F3SV2012
Showers | Self closing showers

with rosettes/cover plate	yes
protective shutdown	no
shower pipe draining	no
Shower head	for separately shower head
with shower set	no
sound insulation	no
surface finish casing	satin finished
surface finish fitting	chromed
surface treatment fitting	polished
temperature limit	no
thermal disinfection	no
type of mounting	wall mounting
type of operation	manual operation
type of shower	shower panel
volume flow rate at 3 bar	0.15 l/s
water connection	hose (gland nut)
position of water connection	from top / backside
with soap dish	no
Accent colour	chrome-look (glossy)
Basic colour	stainless steel-look

Mandatory Accessories



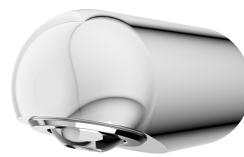
AQUAJET-Slimline shower head for KWC shower panels and systems

2030054255
SHAS0011



AQUAJET-Comfort shower head for KWC shower panels and systems

2030054254
SHAC0011



MÜNCHEN shower head for KWC shower panels and systems

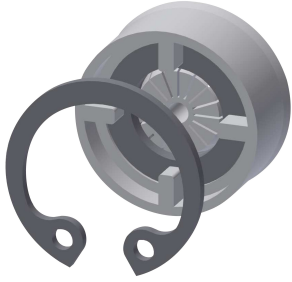
2030054793
SHMU0011

Optional Accessories

KWC F3S

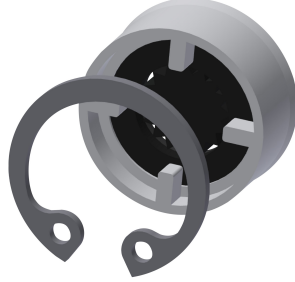
Stainless steel shower panel

Modell-Linie: F3S | F3SV2012
Showers | Self closing showers



Flow controller 6.0 l/min

2030027586
ESHHE0004



Flow controller 12.0 l/min

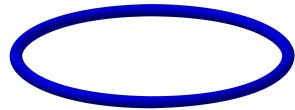
2000104783
ESHHE0002

Spare Parts



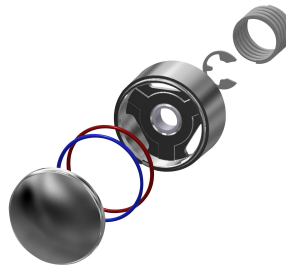
O-Ring, red

2030042961
ASSV2002



O-Ring, blue

2030042962
ASSV2003



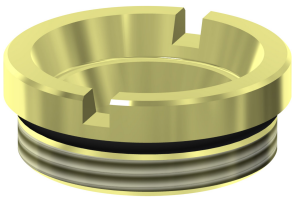
Push cap

2030042960
ASSV2001



Functional part

2000104352
ESHOW0001



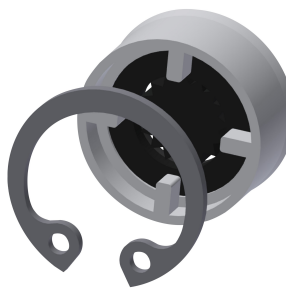
Valve seat DN 15

2000104790
ESHOW0040



Push-on rosette

2000104892
EAQLN0008



Flow controller 9.0 l/min

2000104782
ESHHE0001



Hexagonal socket wrench

2000106127
ZFITG0003

KWC F3S

Stainless steel shower panel

Modell-Linie: F3S | F3SV2012
Showers | Self closing showers



Stainless steel care set

2000109019
ZWSPL0024



Cleaning product CHROMOL

2000105091
ZWSPL0023
