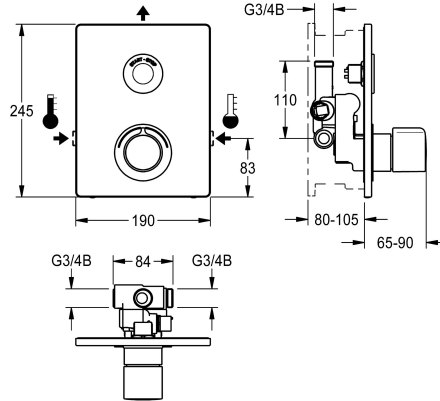


## KWC F5E-Therm - A3000 open Electronic thermostatic in-wall mixer

**Modell-Linie: F5E | F5ET2040**  
Showers | Electronic self closing shower



### KWC-No.

**2030071563**

F5E-Therm - A3000 open thermostatic mixer DN 15 as finished installation kit for in-wall installation in basic installation kit, for shower facilities. Electrically controlled, connects to hot water and cold water. Function block with integrated solenoid valve cartridge, thermostat and two bypass solenoid valve cartridges for separate rinsing of the cold-water line and implementation of program-controlled thermal disinfection as well as for separate sampling of cold or hot water. Thermostat with metal handle with adjustable and turn-proof temperature stop and option for manual thermal disinfection. All-metal construction, visible parts high-polished,

chrome-plated. With holding frame with profile seal, 190 x 245 mm stainless steel cover plate with covered screw fixing including touch sensor with control electronics, start/stop function, rosette, watertight electronic module and electric T-junction for connection to system cables, backflow preventers and strainers. Depth adjustability 25 mm. Activated hygiene flushing 24 hours after the last activity. External control unit, like valve setting, cleaning deactivation, storage of statistical data and communication via ECC2 function controller, 24 V DC.

### Technical Data

|                                 |                                |
|---------------------------------|--------------------------------|
| additional connections          | no                             |
| with backflow preventer         | yes                            |
| Built-in fitting model          | Finishing section              |
| calculation flow rate cold wat  | 0.15 l/s                       |
| calculation flow rate hot water | 0.15 l/s                       |
| circulation                     | no                             |
| compatible A3000 open           | yes                            |
| connection with pay water disp  | single / multiple pay water di |
| Cover plate height              | 245 mm                         |
| Cover plate width               | 190 mm                         |
| default automatic hygiene flus  | 24h after the last activity    |
| default flow time               | 30 Seconds                     |
| with filter                     | yes                            |
| adjustable flow time            | yes                            |
| functional principle            | electronic self-closing        |
| for hand shower                 | no                             |
| hygiene flushing                | yes                            |
| diameter nominal                | DN 15                          |
| inlet size                      | G 3/4 B                        |
| Locking mechanism               | Top section, non-ceramic       |
| material casing                 | stainless steel                |
| material fitting                | brass                          |



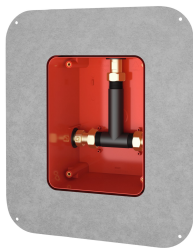
## KWC F5E-Therm - A3000 open Electronic thermostatic in-wall mixer

**Modell-Linie: F5E | F5ET2040**

Showers | Electronic self closing shower

|                               |                                |
|-------------------------------|--------------------------------|
| maximum flow time             | 255 Seconds                    |
| minimum flow pressure         | 1 bar                          |
| minimum flow time             | 1 Seconds                      |
| type of mixing                | with thermostat                |
| Parameterization              | network                        |
| power supply connection       | A3000 open 24 V DC             |
| position of power connection  | from top                       |
| Type of power supply          | Transformer                    |
| with rosettes/cover plate     | yes                            |
| protective shutdown           | yes                            |
| shower pipe draining          | no                             |
| sound insulation              | no                             |
| surface finish casing         | satin finished                 |
| surface finish fitting        | chromed                        |
| surface treatment fitting     | polished                       |
| temperature limit             | yes                            |
| thermal disinfection          | automatic thermal disinfection |
| with transformer/power supply | no                             |
| type of mounting              | in-wall installation with box  |
| type of operation             | sensor operation               |
| type of sensor                | opto-electronic sensor         |
| type of shower                | in-wall fitting                |
| Volume flow rate bypass PWH   | 0.05 l/s                       |
| volume flow rate at 3 bar     | 0.23 l/s                       |
| water connection              | threaded connection (external) |
| position of water connection  | from side                      |
| Accent colour                 | chrome-look (glossy)           |
| Basic colour                  | stainless steel                |

### Mandatory Accessories



**R5 System box for in-wall mixer**

**2030028990**  
F5BX2001



**ECC2 function controller**

**2000108123**  
ZA3OP0011



**ECC2 function controller**

**2030016282**  
ZA3OP0022

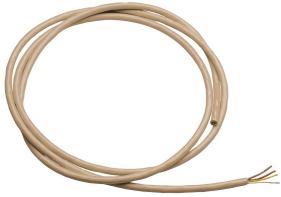


**System cable**

**2000100801**  
ZAQUA077

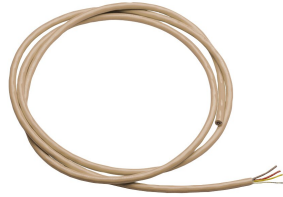
## KWC F5E-Therm - A3000 open Electronic thermostatic in-wall mixer

Modell-Linie: F5E | F5ET2040  
Showers | Electronic self closing shower



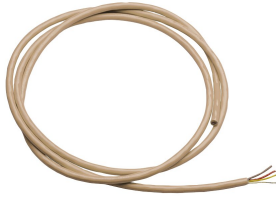
### System cable

**2000100852**  
ZAQUA078



### System cable

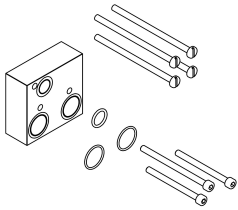
**2000104272**  
ZAQUA011



### System cable

**2000104274**  
ZAQUA012

## Optional Accessories



### Extension set

**2030067889**  
ACXT9001

## Spare Parts



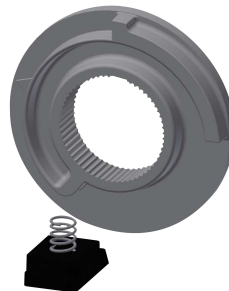
### Cover

**2030003258**  
EAQLT0002



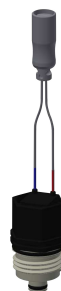
### Temperature handle

**2030047082**  
ASXT9003



### Temperature stop

**2030003296**  
EAQLT0003



### Solenoid valve cartridge

**2030005666**  
EAQFU0004

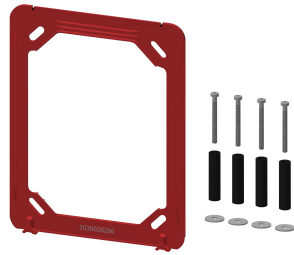
## KWC F5E-Therm - A3000 open Electronic thermostatic in-wall mixer

Modell-Linie: F5E | F5ET2040  
Showers | Electronic self closing shower



**Electrical T junction**

**2000100853**  
ZAQUA075



**Holding frame**

**2030045472**  
ASXX9004