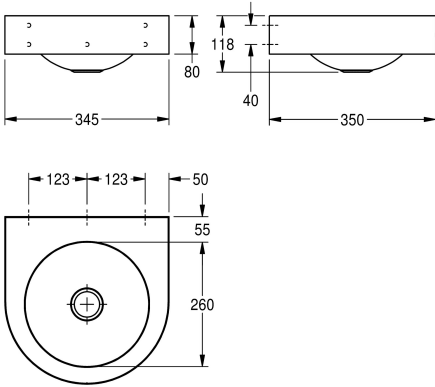
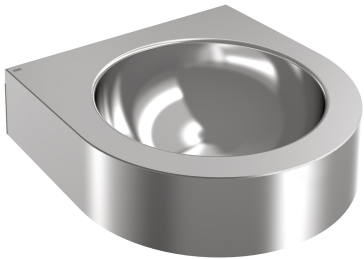




KWC ANIMA
Single washbasin

Modell-Linie: ANIMA | WB260WM
Washbasins & Washtroughs | Wash basins



KWC-No.

2030072330

ANIMA single washbasin, for wall-mounting, stainless steel, satin finished surface, material thickness 1.0 mm, semicircular washbasin shape, seamlessly welded-in round inset vanity basin, with surrounding apron, without overflow, with 55 mm tap ledge (T),

G 1 1/4 B strainer waste, centre waste, including mounting material.

Dimensions 345 x 118 x 350 mm (W x H x D)
Bowl dimensions 260 x 118 mm (D x H)

Technical Data

type of basin
bowl position
bowl - depth
bowl - width
material
material code
material thickness
outlet size
overall depth
overall height
overall width
surface finish
waste kit included

Wash basin
Center
118 mm
260 mm
stainless steel
1.4301 Chrome Nickel steel V2A
1 mm
G 1 1/4 B
350 mm
118 mm
345 mm
satin finished
yes

