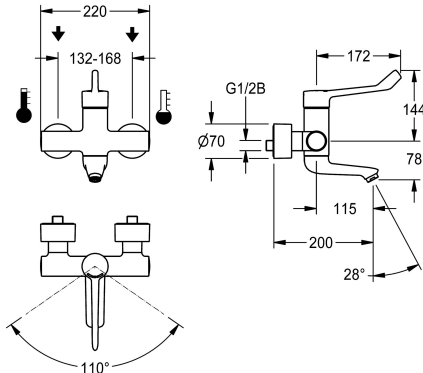


## KWC F4LT-Med Thermostatic single lever mixer

Modell-Linie: F4 | F4LT1024  
Taps | Manual taps



### KWC-No.

**2030072407**

F4LT-Med thermostatic single lever mixer as DN 15 wall-mounted mixer, for wall mounting with lockable swivelling spout, for sanitary facilities in the healthcare and nursing sector, lever length 172 mm. Thermostat-controlled mixer cartridge with expansion element and active scald protection, fail-safe against backflow as well as adjustable, turn-proof temperature stop, ceramic disc technology and flow rate controller 9.0 l/min. Without backflow preventer for optimised drinking water hygiene. Lever cap ergonomically designed in closed construction for contactless lever actuation. For

connecting to hot and cold water. Tap optimised for cleaning, scald-protected, safe-touch housing, all-metal construction, polished chromium-plated brass. Decoupled from the tap housing, volume-reduced, smooth water flow from low-lead brass (lead proportion  $\leq 0.2\%$ ), and without nickel coating. With thermal insulation components to reduce heat transfer from the tap housing to the cold-water line. Self-emptying spout with laminar jet controller. With adjustable and lockable connections with strainers, fully covered by depth-adjustable screw rosettes. 200 mm projection.

### Technical Data

compatible A3000 open

depressurised

functional principle

diameter nominal

inlet size

material fitting

minimum flow pressure

type of mixing

overall width

Pop-up waste set

Spout

spout projection

surface finish casing

surface finish fitting

surface treatment fitting

temperature limit

type of mounting

type of operation

type of tap

volume flow rate at 3 bar

water connection

Accent colour

Basic colour

no

no

manual

DN 15

G 1/2 B

brass

1 bar

with thermostat

220 mm

no

rotating, bottom

115 mm

chromed

chromed

polished

yes

wall mounting

manual operation

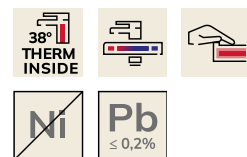
bib tap

0.15 l/s

S-connections

none

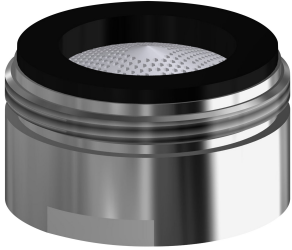
chrome-look (glossy)



## KWC F4LT-Med Thermostatic single lever mixer

Modell-Linie: F4 | F4LT1024  
Taps | Manual taps

### Optional Accessories



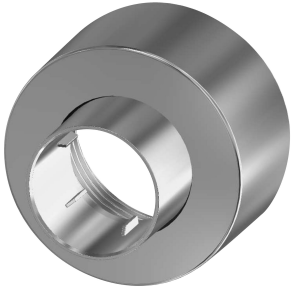
#### Aerator

---

**2030071309**  
ASXX1042

---

### Spare Parts



#### Screw rosette

---

**2030046777**  
ASXX9003

---