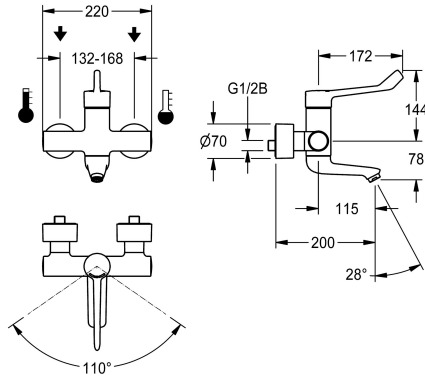


KWC F4LT-Med Thermostatic single lever mixer

Modell-Linie: F4 | F4LT1024
Taps | Manual taps



KWC-No.

2030072407

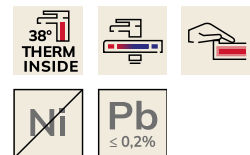
F4LT-Med thermostatic single lever mixer as DN 15 wall-mounted mixer, for wall mounting with lockable swivelling spout, for sanitary facilities in the healthcare and nursing sector, lever length 172 mm. Thermostat-controlled mixer cartridge with expansion element and active scald protection, fail-safe against backflow as well as adjustable, turn-proof temperature stop, ceramic disc technology and flow rate controller 9.0 l/min. Without backflow preventer for optimised drinking water hygiene. Lever cap ergonomically designed in closed construction for contactless lever actuation. For

connecting to hot and cold water. Tap optimised for cleaning, scald-protected, safe-touch housing, all-metal construction, polished chromium-plated brass. Decoupled from the tap housing, volume-reduced, smooth water flow from low-lead brass (lead proportion $\leq 0.2\%$), and without nickel coating. With thermal insulation components to reduce heat transfer from the tap housing to the cold-water line. Self-emptying spout with laminar jet controller. With adjustable and lockable connections with strainers, fully covered by depth-adjustable screw rosettes. 200 mm projection.

Technical Data

| |
|---------------------------|
| compatible A3000 open |
| depressurised |
| functional principle |
| diameter nominal |
| inlet size |
| material fitting |
| minimum flow pressure |
| type of mixing |
| overall width |
| Pop-up waste set |
| Spout |
| spout projection |
| surface finish casing |
| surface finish fitting |
| surface treatment fitting |
| temperature limit |
| type of mounting |
| type of operation |
| type of tap |
| volume flow rate at 3 bar |
| water connection |
| Accent colour |
| Basic colour |

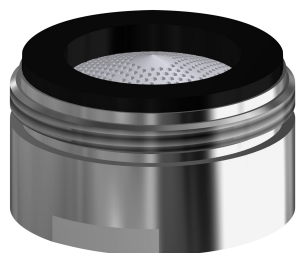
| |
|----------------------|
| no |
| no |
| manual |
| DN 15 |
| G 1/2 B |
| brass |
| 1 bar |
| with thermostat |
| 220 mm |
| no |
| rotating, bottom |
| 115 mm |
| chromed |
| chromed |
| polished |
| yes |
| wall mounting |
| manual operation |
| bib tap |
| 0.15 l/s |
| S-connections |
| none |
| chrome-look (glossy) |



KWC F4LT-Med Thermostatic single lever mixer

Modell-Linie: F4 | F4LT1024
Taps | Manual taps

Optional Accessories



Aerator

2030071309
ASXX1042
