

KWC F4ET-Med Thermostatic wall-mounted mixer

Modell-Linie: F4 | F4ET1001
Taps | Electronic taps

Type of power supply	Battery
protective system IP	IP59K
with rosettes/cover plate	yes
protective shutdown	yes
Spout	rotating, bottom
spout projection	115 mm
surface finish fitting	chromed
surface treatment fitting	polished
temperature limit	yes
thermal disinfection	manual
with transformer/power supply	no
type of batteries	CR-P2 Lithium battery 6V
type of mounting	wall mounting
type of operation	sensor operation
type of sensor	opto-electronic sensor
type of tap	bib tap
volume flow rate at 3 bar	0.15 l/s
water connection	S-connections
Accent colour	none
Basic colour	chrome-look (glossy)

Optional Accessories



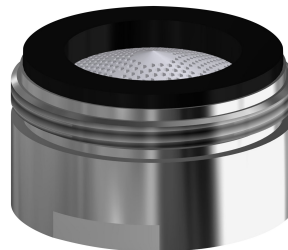
Bidirectional remote control for electronic fittings F3 and F5

2030036654
ACEX9005



2-button remote control for fittings F3 and F5

2030036849
ACEX9004



Aerator

2030071309
ASXX1042

Spare Parts

KWC F4ET-Med Thermostatic wall-mounted mixer

Modell-Linie: F4 | F4ET1001
Taps | Electronic taps



Battery compartment

3600002063
ACEX9023



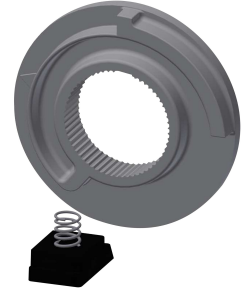
Lithium battery 6 V

2000104846
EPRTR0008



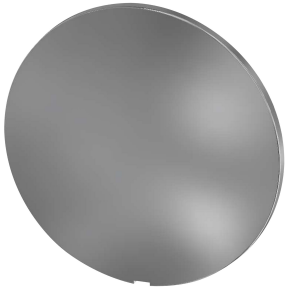
F5 Foil

2030053034
ASET2010



Temperature stop

2030003296
EAQLT0003



Cover

2030003258
EAQLT0002