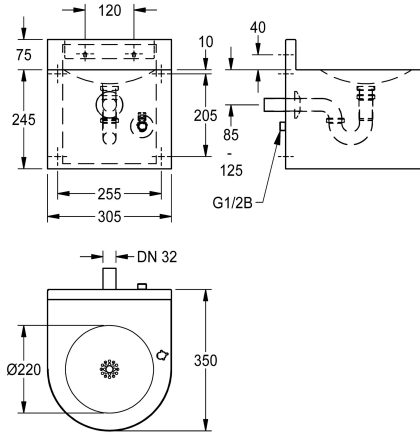


## KWC ANIMA Wall-mounted drinking fountain

Modell-Linie: ANIMA | ANMX33L  
Drinking fountains | Drinking fountains



### KWC-No.

**213.0649.011**

ANIMA wall-mounted drinking fountain, stainless steel, satin finished surface, material thickness 1.2 mm, seamlessly integrated round bowl without overflow, with tap hole, enclosed design with screwed-on inspection cover and circumferential apron, strainer waste G 1 1/4 B with siphon DN 32, including mounting material.

Dimensions 305 x 320 x 350 mm (W x H x D)  
Bowl dimensions 220 x 33 mm (D x H)

Drinking fountain tap or bottle filler tap must be ordered separately.

### Technical Data

bottle filler
bowl - bowl height
bowl - depth
bowl - width
drinking bubbler
glass filler
material
material code
material thickness
outlet size
overall depth
overall height
overall width
surface finish
type of mounting
waste hole position
waste kit included

optional
33 mm
220 mm
220 mm
optional
optional
stainless steel
1.4301 Chrome Nickel steel V2A
1.2 mm
DN 32
350 mm
320 mm
305 mm
satin finished
wall mounting
centre
yes

### Mandatory Accessories

## KWC ANIMA

Wall-mounted drinking fountain

Modell-Linie: ANIMA | ANMX33L

Drinking fountains | Drinking fountains



**ANIMA drinking fountain tap**

**213.0654.085**  
ANMX-BU



**Self-closing drinking bubbler**

**2000101118**  
AQRM304



**ANIMA bottle filler tap**

**213.0654.086**  
ANMX-BT

### Optional Accessories



**ANIMA apron**

**213.0651.922**  
ANMX-S2

### Spare Parts



**Stainless steel care set**

**2000109019**  
ZWSPL0024



**Cleaning product CHROMOL**

**2000105091**  
ZWSPL0023

## KWC ANIMA

Wall-mounted drinking fountain

Modell-Linie: ANIMA | ANMX33L

Drinking fountains | Drinking fountains

### Consumables



### Cleaning product CHROMOL

---

**2000105091**

ZWSPL0023

---