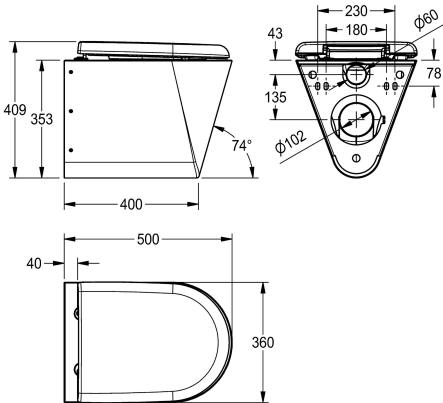




KWC CAMPUS
Wall hung WC pan

Modell-Linie: CAMPUS | CMPX592GN
WCs and urinals | WCs



KWC-No.
2000100133
Without toilet seat
2000100134
With 2 toilet seat pads
3600000629
With black toilet seat
3600000650
With grey toilet seat
3600000651
With white toilet seat

Wall hung WC pan, stainless steel, surface satin finished, material thickness 1,5 mm, flushing certificated to EN 997, concealed flushing rim with min. 4 liter flushing capacity, with a shrouded 100 mm diameter horizontal 'P' trap outlet, pressed seat area tapered towards centre, all edges curved, fixing with mounting plate

type of toilet seat
no seat
synthetic seat pad
synthetic hinged seat with lid
synthetic hinged seat with lid
synthetic hinged seat with lid

supplied, conform to EN 33, includes security screws. 4 litre flush EN997 approved.

With grey WC-seat
Dimensions 360 x 409 x 500 mm (W x H x D)

Technical Data
inlet size
material
material code
material thickness
minimum flushing capacity
outlet size
overall depth
overall height
overall width
toilet seat colour
surface finish
type of mounting
type of toilet seat
type of WC

DN 55
stainless steel
1.4301 Chrome Nickel steel V2A
1.5 mm
4 Liter
DN 100
500 mm
409 mm
360 mm
grey
satin finished
wall mounting
synthetic hinged seat with lid
wall hung

Spare Parts



KWC CAMPUS
Wall hung WC pan

Modell-Linie: **CAMPUS** | **CMPX592GN**
WCs and urinals | WCs



Toilet seat

3600000624
ECMPX592-SEATGN

Toilet seat

3600000626
ECMPX592-SEATBN

Toilet seat

3600000627
ECMPX592-SEATWN

Hinge

3600000658
ECMPX0058N