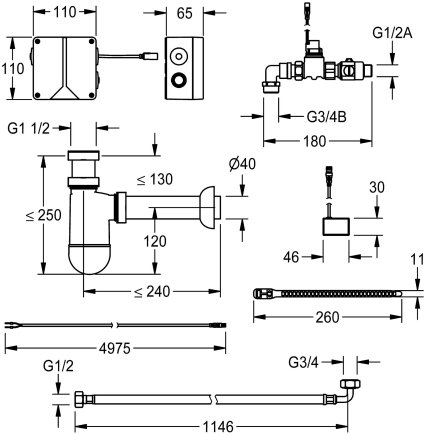


KWC
Electronic trap control

Modell-Linie: **FLUSHING-TAPS-ELEC | AQUA422N**
Flushing systems | Electronic urinal flushing systems



KWC-No.
3600002630
Electronic siphon version for KWC row urinals

Electronic siphon control unit for invisible installation, for touch-free flushing of KWC stainless steel trough urinals. With connection hoses, solenoid valve, siphon with externally mounted sensor without water contact and electronic box including power supply

unit and control with extended blocking time, 230 V AC.

Trap cover must be ordered separately.

| Technical Data | |
|--------------------------------|--|
| default automatic hygiene flus | |
| Flushing volume adjustable | |
| functional principle | |
| diameter nominal | |
| inlet size | |
| material fitting | |
| minimum flow pressure | |
| Parameterization | |
| power supply connection | |
| Type of power supply | |
| protective system IP | |
| sound insulation | |
| with transformer/power supply | |
| type of flushing fitting | |
| type of mounting | |
| type of operation | |
| type of sensor | |
| water connection | |
| Basic colour | |

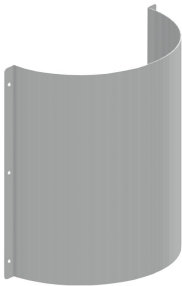
| |
|--------------------------------|
| 24h after the last activity |
| no |
| electronic self-closing |
| DN 15 |
| G 1/2 B |
| synthetic |
| 1 bar |
| manual |
| 230 V AC |
| Transformer |
| IP68 |
| no |
| yes |
| urinal flush valve |
| wall mounting |
| sensor operation |
| radar-electronic sensor |
| threaded connection (external) |
| Other |

Mandatory Accessories



KWC
Electronic trap control

Modell-Linie: FLUSHING-TAPS-ELEC | AQUA422N
Flushing systems | Electronic urinal flushing systems



CAMPUS Trap cover for slab urinals

2000102739
ZCMPX0010