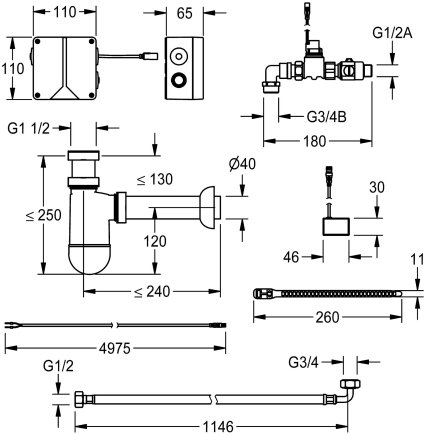


KWC  
Electronic trap control

Modell-Linie: **FLUSHING-TAPS-ELEC | AQUA422N**  
Flushing systems | Electronic urinal flushing systems



**KWC-No.**  
**3600002630**  
Electronic siphon version for KWC row urinals

NEW

Electronic siphon control unit for invisible installation, for touch-free flushing of KWC stainless steel trough urinals. With connection hoses, solenoid valve, siphon with externally mounted sensor without water contact and electronic box including power supply

unit and control with extended blocking time, 230 V AC.  
Trap cover must be ordered separately.

Technical Data

default automatic hygiene flus
Flushing volume adjustable
functional principle
diameter nominal
inlet size
material fitting
minimum flow pressure
Parameterization
power supply connection
Type of power supply
protective system IP
sound insulation
with transformer/power supply
type of flushing fitting
type of mounting
type of operation
type of sensor
water connection
Basic colour

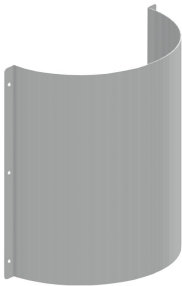
24h after the last activity
no
electronic self-closing
DN 15
G 1/2 B
synthetic
1 bar
manual thermal disinfection
230 V AC
Transformer
IP68
no
yes
urinal flush valve
wall mounting
sensor operation
radar-electronic sensor
threaded connection (external)
Other

Mandatory Accessories



**KWC**  
Electronic trap control

**Modell-Linie: FLUSHING-TAPS-ELEC | AQUA422N**  
Flushing systems | Electronic urinal flushing systems



**CAMPUS Trap cover for slab urinals**

**2000102739**  
ZCMPX0010