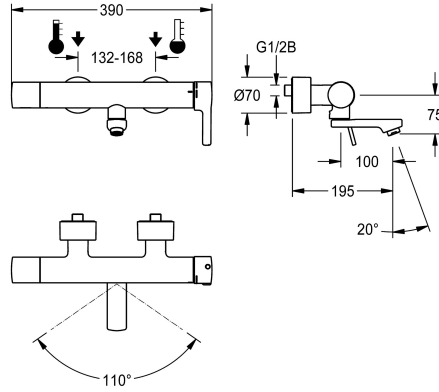


## KWC F5L-Therm

Thermostatic single-lever wall-mounted mixer with pre-fitted hygiene unit

Modell-Linie: F5L | F5LT1113

Taps | Manual taps



### KWC-No.

**3600003807**

Projection 195 mm

**3600003809**

Projection 135 mm

**3600003852**

Projection 255 mm

### spout projection

100 mm

40 mm

160 mm

NEW

F5L-Therm thermostatic single-lever mixer DN 15 as wall-mounted mixer for wall mounting with lockable swivelling spout, for sanitary facilities. Thermostatically controlled mixer cartridge with expansion element and active scald protection as well as adjustable and turn-proof temperature stop and ceramic disc technology. Pre-fitted hygiene unit with C-module including control electronics, 6 V lithium battery (CR-P2) and solenoid valve cartridge for automatic hygiene flushing and saving of statistical data. For connection to hot and cold water. Scald-protected, safe-touch housing, all-metal construction, polished chromium-plated brass. Volume-reduced, smooth water lines made of brass without nickel coating, decoupled

from the tap housing. With thermal insulation components to reduce heat transfer from the tap housing to the cold-water line. Laminar jet controller with integrated flow rate controller 6.0 l/min. With adjustable and lockable connections with backflow preventers and strainers, fully covered by depth-adjustable screw rosettes. 195 mm projection. Activated hygiene flushing, fixed interval of 24 hours. With option for radio-controlled parameterisation, read-out of statistical data, realisation of predefined calendar functions as well as grouping of taps to perform predefined control functions via the necessary app.

### Technical Data

depressurised

adjustable flow time

functional principle

diameter nominal

inlet size

Locking mechanism

material fitting

type of mixing

Pop-up waste set

Type of power supply

protective shutdown

sound insulation

Spout

spout projection

surface finish casing

surface finish fitting

surface treatment fitting

temperature limit

with transformer/power supply

no

no

manual

DN 15

G 1/2 B

Top section, ceramic

brass-look

with thermostat

no

Battery

no

no

rotating, bottom

100 mm

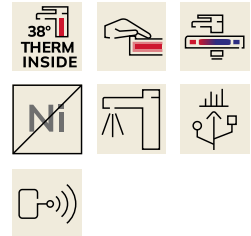
chromed

chromed

polished

yes

no



## KWC F5L-Therm

Thermostatic single-lever wall-mounted mixer with pre-fitted hygiene unit

**Modell-Linie: F5L | F5LT1113**

Taps | Manual taps

type of mounting

wall mounting

type of operation

manual operation

type of tap

bib tap

water connection

S-connections

Accent colour

none

Basic colour

chrome-look (glossy)

### Optional Accessories



#### Theft-proof housing for aerator

**2000104778**

ZTAPS0005