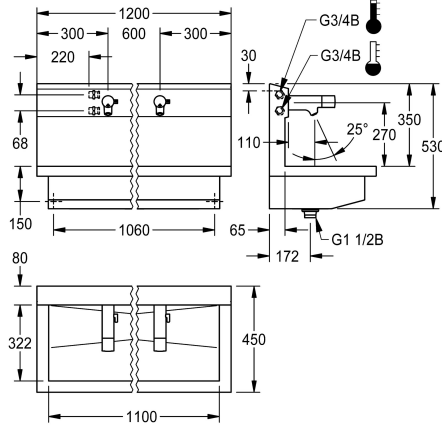


## KWC PLANOX

Washbasin unit with electronic washbasin mixers

Modell-Linie: PLANOX | PL12UEM

Washbasins & Washtroughs | Washtroughs



### KWC-No.

#### 3600004043

with two wash places  
Dimensions 1200 x 530 x 440 mm (W x H x D)

#### 3600004041

with one wash place  
Dimensions 600 x 530 x 440 mm (W x H x D)

#### 3600004044

with three wash places  
Dimensions 1800 x 530 x 440 mm (W x H x D)

#### 3600004045

with four wash places  
Dimensions 2400 x 530 x 440 mm (W x H x D)

### overall width

1,200 mm

600 mm

1,800 mm

2,400 mm

NEW

PLANOX washbasin unit with seamless welded trough, with two wash places, suitable for wall mounting, for connection to hot or cold water from the rear right or left. Stainless steel housing, satin finish, material thickness 1.5 mm. Centre waste, G 1 1/2 B flat perforated waste, including mounting material. Ready for connection, with fitted F5E-Mix electronic washbasin mixers, opto-electronically controlled, activated by hand movement. Control electronics, solenoid valve cartridge, 6 V lithium battery (CR-P2) and sensor in all-metal housing, polished chromium-plated brass. Temperature lever with

adjustable, turn-proof temperature stop. Anti-theft aerator, SLIM design, with integrated flow rate controller 5.0 l/min. Activated hygiene flushing 24 hours after last activation, safety switch-off for continuous reflection and saving of statistical data. Parameterisation and communication possible via optional bidirectional remote control.

Dimensions 1200 x 530 x 440 mm (W x H x D)  
Wash place width 600 mm

### Technical Data

material	stainless steel
material code	1.4301 Chrome Nickel steel V2A
number of waste holes	1
overall width	1,200 mm
rear upstand	no
splash back	yes
surface finish	satin finished
type of mounting	wall mounting
type of waste kit	perforated waste
waste hole position	centre
waste kit included	yes

material	stainless steel
material code	1.4301 Chrome Nickel steel V2A
number of waste holes	1
overall width	1,200 mm
rear upstand	no
splash back	yes
surface finish	satin finished
type of mounting	wall mounting
type of waste kit	perforated waste
waste hole position	centre
waste kit included	yes

### Optional Accessories

## KWC PLANOX

Washbasin unit with electronic washbasin mixers

Modell-Linie: PLANOX | PL12UEM

Washbasins & Washtroughs | Washtroughs



**Bidirectional remote control for electronic fittings F3 and F5**

**2030036654**  
ACEX9005



**2-button remote control for fittings F3 and F5**

**2030036849**  
ACEX9004



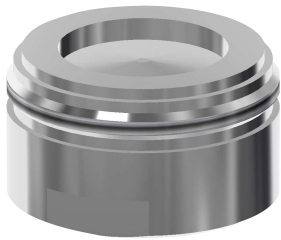
**5.0 l/min aerator, angle-adjustable**

**2030041326**  
ACXX1002



**3.0 l/min. aerator**

**2030041424**  
ASXX1008



**Aerator 1.8 l/min**

**2030041442**  
ACXX1005



**Hexagonal socket wrench**

**2030047722**  
ACEX9011



**Stainless steel care set**

**2000109019**  
ZWSPL0024



**Trap**

**2000101371**  
E-RNDX-SIPHON

### Spare Parts



**F5E-Mix electronic washbasin mixer for fitting unit or wall flange**

**2030058995**  
F5EM1015



**Lithium battery 6 V**

**2000104846**  
EPRTR0008



**Solenoid valve cartridge**

**2030045522**  
ACXX9002



**F5 Foil**

**2030053034**  
ASET2010

## KWC PLANOX

Washbasin unit with electronic washbasin mixers

Modell-Linie: PLANOX | PL12UEM

Washbasins & Washtroughs | Washtroughs



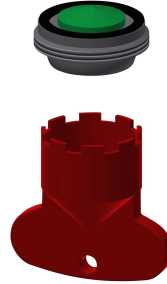
**Battery compartment**

**3600002063**  
ACEX9023



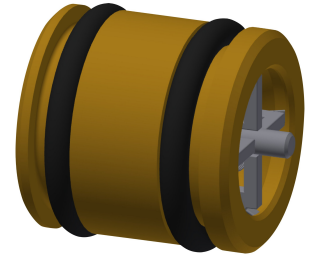
**Mounting key**

**2030041329**  
ACXX1003



**Aerator 5.0 l/min**

**2030041011**  
ASXX1004



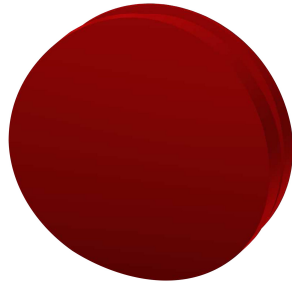
**Guide bushing**

**2030023924**  
ETAPS0040



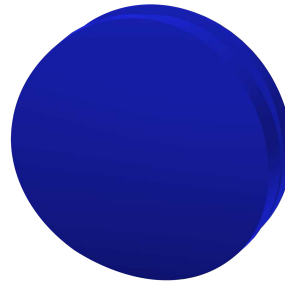
**Temperature selection lever**

**2030041431**  
ASEM1001



**Plug red**

**2030041951**  
ASEX1009



**Plug blue**

**2030041952**  
ASEX1010



**Hexagonal socket wrench**

**2030047722**  
ACEX9011



**Stainless steel care set**

**2000109019**  
ZWSPL0024



**Cleaning product CHROMOL**

**2000105091**  
ZWSPL0023