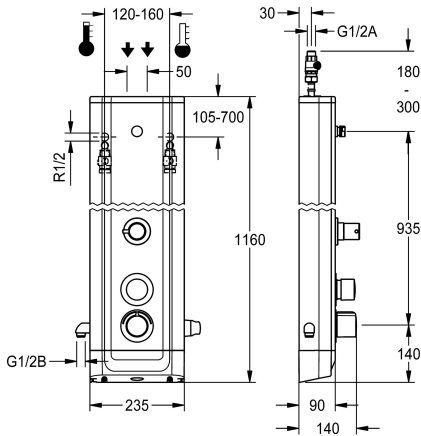


KWC F5S-Therm  
Shower panel made of stainless steel with diverter between overhead shower and hand shower

Modell-Linie: F5 | F5ST2046  
Showers | Self closing showers



KWC-No.

3600004618

NEW

F5S-Therm shower panel made of stainless steel for wall mounting with DN 15 self-closing thermostatic mixer and diverter between overhead shower and hand shower. Hydraulically controlled, connects to hot water and cold water. Function block with integrated FRAMIC self-closing cartridge, thermostat and pre-assembled hygiene unit including sensor with control electronics to perform automatic water hygiene flushing, program-controlled thermal disinfection (additional bypass solenoid-operated flush valve cartridge necessary) and storage of statistical data. FRAMIC self-closing cartridge, low maintenance and stagnation free, with ceramic disc technology, self closing, flow pressure independent due to medium-independent design. Flow duration can be adjusted by any increment. Thermostat with metal handle with adjustable and turn-proof temperature stop and option for manual thermal disinfection. All-metal construction, visible parts polished chrome-plated. Connecting nozzles for separately required DN 15 KWC shower head with pre-fitted flow regulator 9.0 l/min. Stainless steel

housing with raised function surface and cover caps made of plastic. Hand shower connection on the left and chrome-plated plastic hand shower holder on the right, both pre-assembled on the side. Connector hoses with lockable water flow control with backflow preventer and strainer. Activated hygiene flushing, fixed interval of 24 hours. With option for parameterization and communication via optional, bidirectional remote control. Optional hygiene unit for battery operation with 6 V lithium battery (CR-P2) per fitting or separate power supply via plug-in power supply unit 6.75 V/12 V DC.

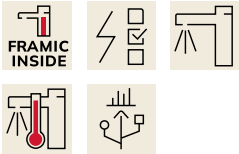
Housing dimensions 235 x 1160 x 90 mm (W x H x D)

Shower head, hand shower with shower hose and battery compartment including battery or power supply unit with extension cable must be ordered separately.

Technical Data

additional connections
with backflow preventer
circulation
compatible A3000 open
connection with pay water disp
default automatic hygiene flus
with filter
adjustable flow time
functional principle
for hand shower
hygiene flushing
diameter nominal
inlet size
Locking mechanism
material casing
material code casing
material fitting
maximum flow time

for handshower with switch
yes
no
no
not possible
fixed interval 24 hours
yes
yes
hydraulic self-closing
yes
yes
DN 15
G 1/2 A
Top section, ceramic
stainless steel
1.4301 Chrome Nickel steel V2A
brass
35 Seconds



KWC F5S-Therm  
Shower panel made of stainless steel with diverter between overhead shower and hand shower

Modell-Linie: F5 | F5ST2046  
Showers | Self closing showers

minimum flow pressure	1.5 bar
minimum flow time	5 Seconds
type of mixing	with thermostat
overall depth	90 mm
overall height	1,160 mm
overall width	235 mm
Parameterization	remote control
power supply connection	6,75 / 12 V DC
position of power connection	from top / backside
Type of power supply	Other
protective system IP	IP59K
with rosettes/cover plate	yes
protective shutdown	no
shower pipe draining	no
Shower head	for separately shower head
with shower set	no
sound insulation	no
surface finish casing	satin finished
surface finish fitting	chromed
surface treatment fitting	polished
temperature limit	yes
thermal disinfection	yes
with transformer/power supply	no
type of mounting	wall mounting
type of operation	manual operation
type of sensor	opto-electronic sensor
type of shower	shower panel
volume flow rate at 3 bar	0.15 l/s
water connection	hose (gland nut)
position of water connection	from top / backside
with soap dish	no
Accent colour	chrome-look (glossy)
Basic colour	stainless steel

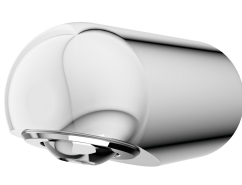
Mandatory Accessories



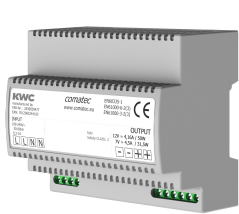
AQUAJET-Slimline shower head for KWC shower panels and systems



AQUAJET-Comfort shower head for KWC shower panels and systems



MÜNCHEN shower head for KWC shower panels and systems



Power supply unit

**KWC F5S-Therm**  
Shower panel made of stainless steel with diverter between overhead shower and hand shower

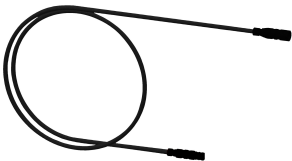
Modell-Linie: **F5 | F5ST2046**  
Showers | Self closing showers

**2030054255**  
SHAS0011

**2030054254**  
SHAC0011

**2030054793**  
SHMU0011

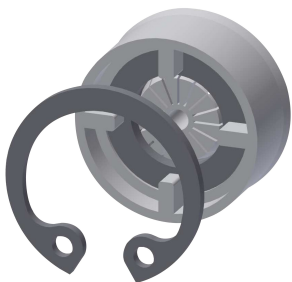
**2030039477**  
ACEX9001



Extension cable 5 m

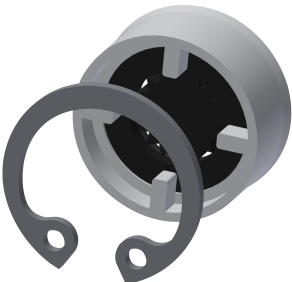
**2030043814**  
ACEX9010

Optional Accessories



Flow controller 6.0 l/min

**2030027586**  
ESHHE0004



Flow controller 12.0 l/min

**2000104783**  
ESHHE0002



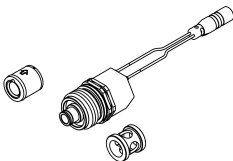
Hand shower

**2030051216**  
ACXX2007



Shower bracket

**2030051217**  
ACXX2008



Set for thermal disinfection

**2030057940**  
ACXT2001



Bidirectional remote control for electronic fittings F3 and F5

**2030036654**  
ACEX9005



2-button remote control for fittings F3 and F5

**2030036849**  
ACEX9004

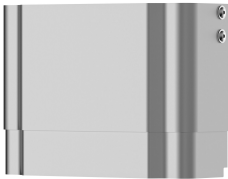


Housing extension for F5 shower panels made of stainless steel

**2030057066**  
ACXX2011

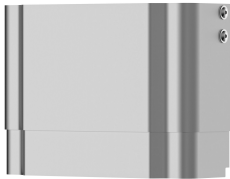
**KWC F5S-Therm**  
Shower panel made of stainless steel with diverter between overhead shower and hand shower

**Modell-Linie: F5 | F5ST2046**  
Showers | Self closing showers



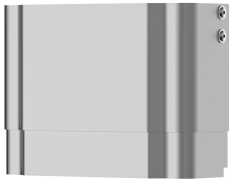
Housing extension for F5 shower panels made of stainless steel

**2030057067**  
ACXX2012



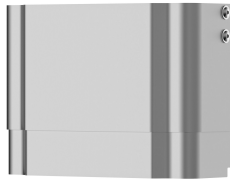
Housing extension for F5 shower panels made of stainless steel

**2030057068**  
ACXX2013



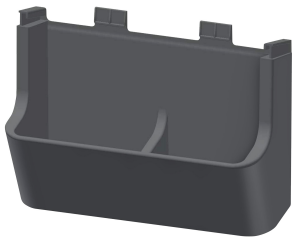
Housing extension for F5 shower panels made of stainless steel

**2030057069**  
ACXX2014



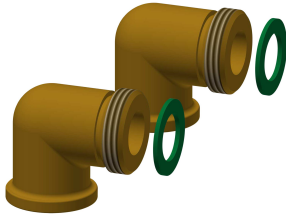
Housing extension for F5 shower panels made of stainless steel

**2030057070**  
ACXX2015



Shower gel dish for F5 shower panels made of stainless steel

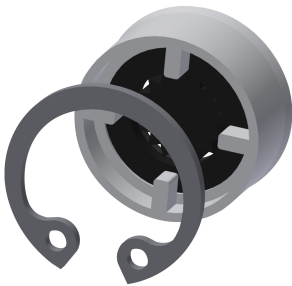
**2030057077**  
ACXX2021



Connection set for shower panel

**2000104916**  
ZSHOW0006

**Spare Parts**



Flow controller 9,0 l/min

**2000104782**  
ESHHE0001



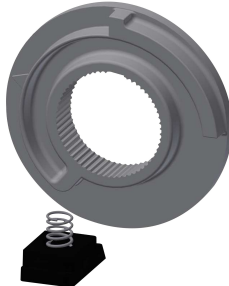
Cover

**2030031443**  
ESHOW0059



Temperature handle

**2030047082**  
ASXT9003

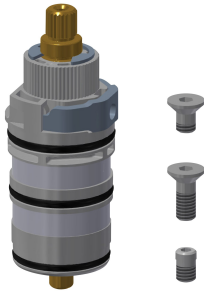


Temperature stop

**2030003296**  
EAQLT0003

**KWC F5S-Therm**  
Shower panel made of stainless steel with diverter between overhead shower and hand shower

Modell-Linie: F5 | F5ST2046  
Showers | Self closing showers



Thermocouple

2030003300  
EAQLT0004



Plug chromed

2030053006  
ASSX9004



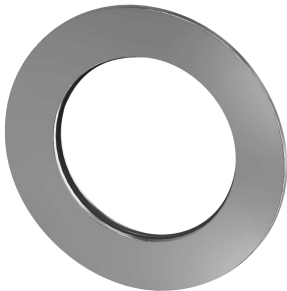
Push cap

2030049943  
ASST2001



Guide ring

2030048356  
ASSX9002



Rosette

2030048765  
ASET2006



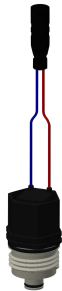
Safety ring

2030048357  
ASSX9003



FRAMIC Self-closing cartridge

2030046145  
ASSX9001



Solenoid valve cartridge

2030003033  
EAQFU0001



Stainless steel care set

2000109019  
ZWSPL0024



Cleaning product CHROMOL

2000105091  
ZWSPL0023