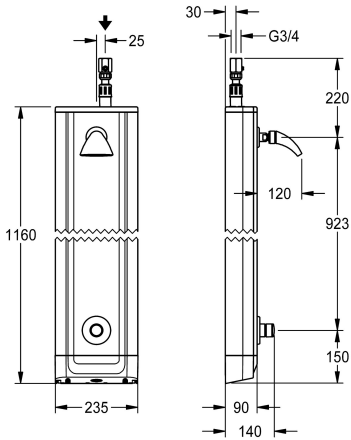


KWC F3S
Shower panel made of stainless steel with waterfall shower

Modell-Linie: F3S | F3SV2015
Showers | Self closing showers



KWC-No.

3600007158

NEW

F3S shower panel made of stainless steel for wall mounting with DN 20 self-closing gate valve and waterfall shower. Hydraulically controlled, for connection from above to pre-mixed hot or cold water. Self-closing functional part, piston-free design, self-closing and stepless adjustment of flow duration. Valve housing including shuttle valve seat, visible parts polished chrome-plated. DN 15

waterfall shower with ball joint and rosette. Adjustable jet tilt angle 28°. Polished chromium-plated brass. Stainless steel housing with raised function surface and plastic cover caps. Connecting hose with lockable water flow regulator and strainer.

Dimensions of housing 235 x 1160 x 90 mm (W x H x D)

Technical Data

additional connections
with backflow preventer
circulation
compatible A3000 open
connection with pay water disp
with filter
adjustable flow time
functional principle
for hand shower
hygiene flushing
diameter nominal
inlet size
Locking mechanism
material casing
material code casing
material fitting
maximum flow time
minimum flow pressure
minimum flow time
type of mixing
overall depth
overall height
overall width
Parameterization
with rosettes/cover plate

no
no
no
no
not possible
yes
yes
hydraulic self-closing
no
no
DN 20
DN 20
Top section, non-ceramic
stainless steel
1.4301 Chrome Nickel steel V2A
brass
30 Seconds
1 bar
5 Seconds
no
90 mm
1,160 mm
235 mm
manual thermal disinfection
yes

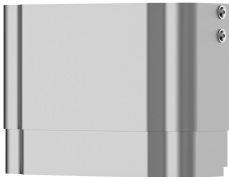


KWC F3S
Shower panel made of stainless steel with waterfall shower

Modell-Linie: F3S | F3SV2015
Showers | Self closing showers

protective shutdown	no
shower pipe draining	no
Shower head	with shower head
with shower set	no
sound insulation	no
surface finish casing	satin finished
surface finish fitting	chromed
surface treatment fitting	polished
temperature limit	no
thermal disinfection	no
adjustable tilt angle	yes
type of mounting	wall mounting
type of operation	manual operation
type of shower	shower panel
type of shower head	drench shower head
volume flow rate at 3 bar	1.03 l/s
water connection	hose (gland nut)
position of water connection	above
with soap dish	no
Accent colour	chrome-look (glossy)
Basic colour	stainless steel

Optional Accessories



Housing extension for F5 shower panels made of stainless steel

2030057066
ACXX2011



Housing extension for F5 shower panels made of stainless steel

2030057067
ACXX2012



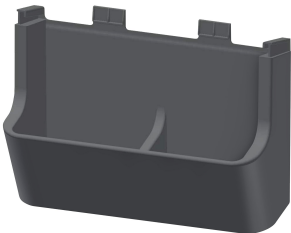
Housing extension for F5 shower panels made of stainless steel

2030057068
ACXX2013



Housing extension for F5 shower panels made of stainless steel

2030057069
ACXX2014



KWC F3S
Shower panel made of stainless steel with waterfall shower

Modell-Linie: F3S | F3SV2015
Showers | Self closing showers

Housing extension for F5 shower
panels made of stainless steel

2030057070
ACXX2015

Shower gel dish for F5 shower panels
made of stainless steel

2030057077
ACXX2021

Spare Parts



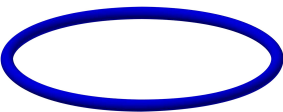
Drench shower for wall mounting

2030034417
SHHE0004



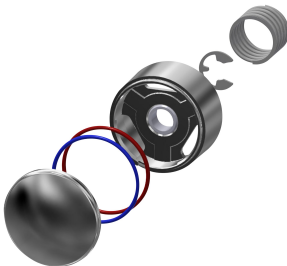
O-Ring, red

2030042961
ASSV2002



O-Ring, blue

2030042962
ASSV2003



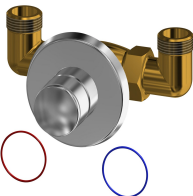
Push cap

2030042960
ASSV2001



Push-on rosette

2000104892
EAQLN0008



F3S self-closing gate valve for
installation in stainless steel
panelling for showers

3600009676
ASSV2013



Stainless steel care set

2000109019
ZWSPL0024



Cleaning product CHROMOL

2000105091
ZWSPL0023



Hexagonal socket wrench



KWC F3S
Shower panel made of stainless steel with waterfall shower

Modell-Linie: F3S | F3SV2015
Showers | Self closing showers

2000106127
ZFITG0003
