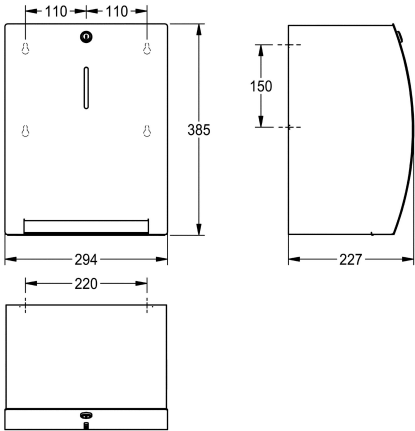


KWC STRATOS
Paper towel dispenser for wall mounting

Modell-Linie: STRATOS | STR637
Accessories | Paper towel dispensers



Article Number

3600008866
Dimensions 294 x 385 x 227 mm (W x H x D)

STRATOS paper towel dispenser for wall mounting, stainless steel, surface satin finished, material thickness 1.5 mm, curved front with inspection window, cylinder lock with key, capacity one paper roll, paper is transported automatically - to be pulled by hand, maintenance-free mechanism, no electrical connections or batteries required, easy roll change mechanism for rolls with

maximum width 205 mm and maximum diameter 200 mm, fixed paper tear-off length 260 mm, adjustable paper roll holder for optimised paper dispensing, including mounting material.

Dimensions 294 x 385 x 227 (W x H x D)

Technical Data

maximum depth/diameter of cons	200 mm
maximum width of consumable	205 mm
filling quantity	1
filling quantity uom	rolls
lock	key-lock
material	stainless steel
material code	1.4301 Chrome Nickel steel V2A
material thickness	1.5 mm
overall depth	227 mm
overall height	385 mm
overall width	294 mm
surface finish	satin finished
type of consumable	paper roll
type of fixing	screw
type of mounting	wall mounting
type of operation	manual operation