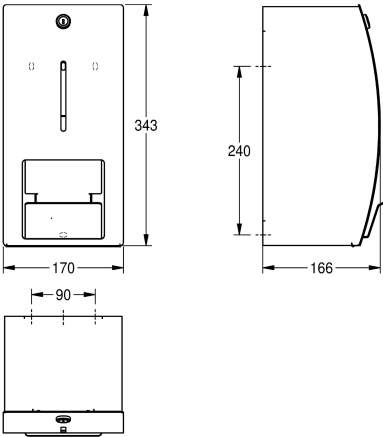




**KWC** STRATOS  
Toilet roll holder for wall mounting

**Modell-Linie:** STRATOS | STR671L  
Accessories | WC-roll holders



**Article Number**

**3600008880**  
without spindle system, Dimensions 170 x 343 x 166 mm (W x H x D)

STRATOS double toilet roll holder without spindle system for wall mounting, stainless steel, surface satin finished, material thickness 1.5 mm, closed casing with curved front and inspection window, cylinder lock with key, for two rolls with a maximum diameter of

140 mm, second roll falls into dispenser position when flap is opened, mounting material included.

Dimensions 170 x 343 x 166 mm (W x H x D)

**Technical Data**

maximum depth/diameter of cons	140 mm
maximum width of consumable	115 mm
filling quantity	2
filling quantity uom	rolls
lock	key-lock
material	stainless steel
material code	1.4301 Chrome Nickel steel V2A
material thickness	1.5 mm
overall depth	166 mm
overall height	343 mm
overall width	170 mm
spindle	no
type of fixing	screw
type of mounting	wall mounting