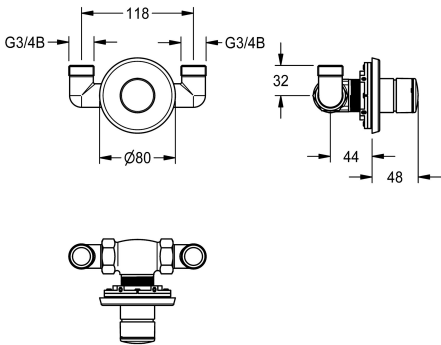
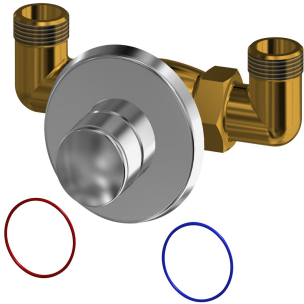


KWC F3S  
Self-closing gate valve for installation in stainless steel panelling for showers

Modell-Linie: F3S | ASSV2013  
Spare parts | Spare parts showers



KWC-No.

3600009676

NEW

F3S self-closing gate valve DN 20 for installation in stainless steel panelling for showers with self-closing functional part, hydraulically controlled, piston-free design, self-closing, adjustable flow duration.

Housing including shuttle position, with exterior thread G 3/4, visible parts made of polished chromium-plated brass, with rosette.

Technical Data

additional connections
with backflow preventer
Built-in fitting model
calculation flow rate cold wat
circulation
compatible A3000 open
connection with pay water disp
with filter
adjustable flow time
functional principle
for hand shower
hygiene flushing
diameter nominal
inlet size
Locking mechanism
material fitting
maximum flow time
minimum flow pressure
minimum flow time
type of mixing
with rosettes/cover plate
protective shutdown
shower pipe draining
sound insulation
surface finish fitting
temperature limit

no
no
Built-in section
0.3 l/s
no
no
not possible
no
yes
hydraulic self-closing
no
no
DN 20
G 3/4
Top section, non-ceramic
brass-look
30 Seconds
1 bar
5 Seconds
no
yes
no
no
no
chromed
no



**KWC F3S**  
Self-closing gate valve for installation in stainless steel panelling for showers

**Modell-Linie: F3S | ASSV2013**  
Spare parts | Spare parts showers

thermal disinfection	no
type of mounting	mounted on product
type of operation	manual operation
type of shower	fitting for stainless steel ho
volume flow rate at 3 bar	1.25 l/s
water connection	threaded connection (external)
position of water connection	from top
Accent colour	none
Basic colour	chrome-look (glossy)